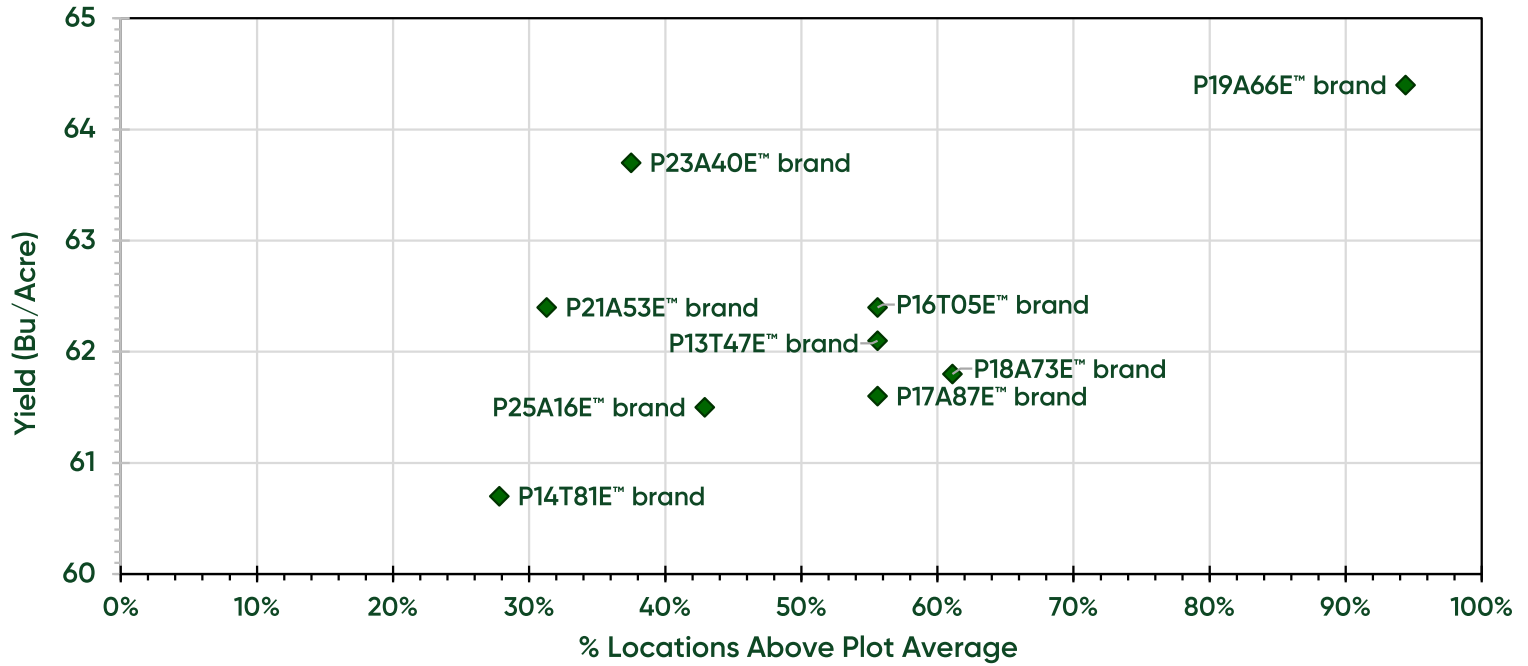
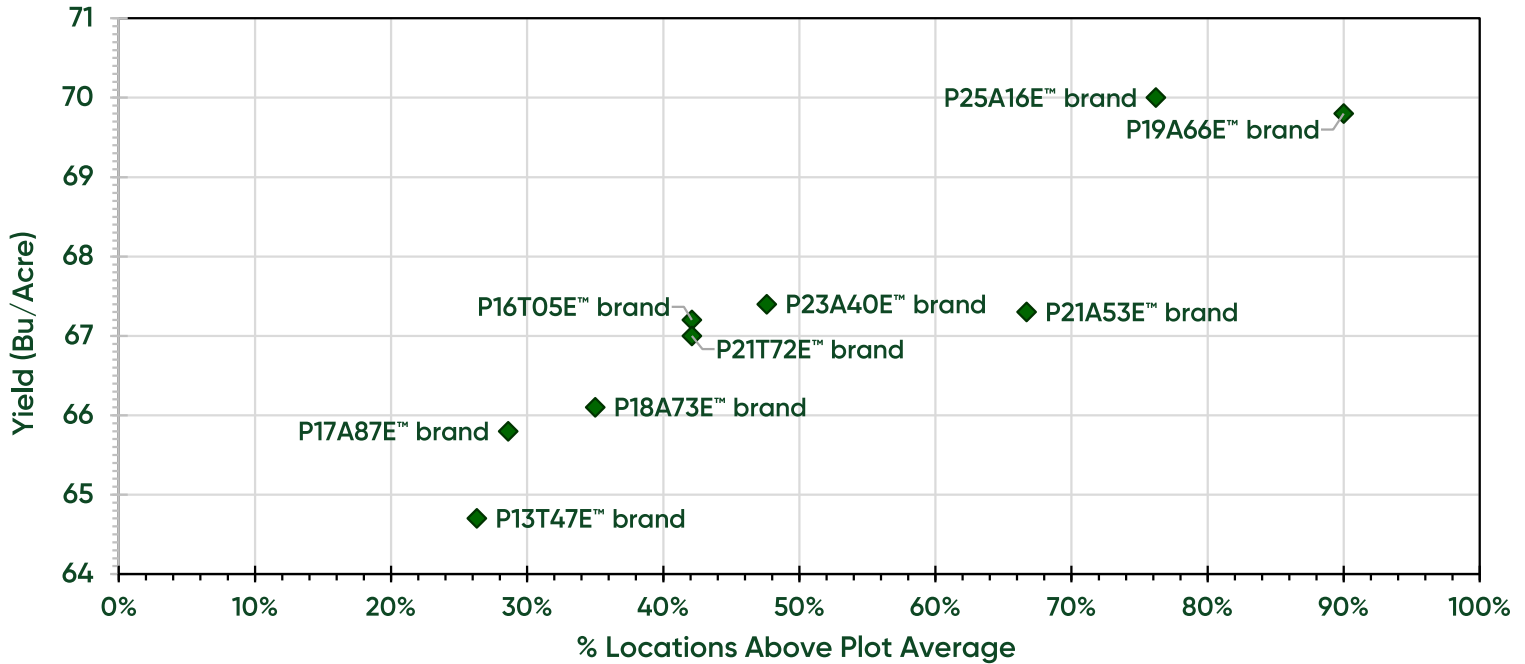
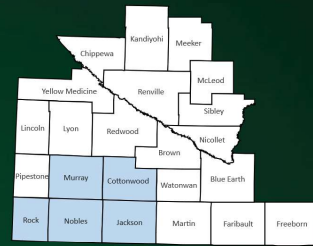


2022 West Central Minnesota Pioneer Enlist E3[®] Soybean Plots

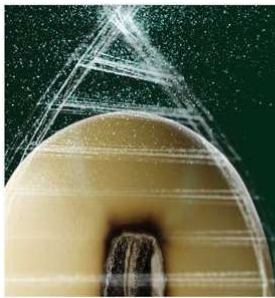


Area of Minnesota	Pioneer Sales Representative	County	Planting Date	Harvest Date	Pioneer Enlist E3 [®] Products at these locations									Average
					P13T47E™ brand	P14T81E™ brand	P16T05E™ brand	P17A87E™ brand	P18A73E™ brand	P19A66E™ brand	P21A53E™ brand	P23A40E™ brand	P25A16E™ brand	
West Central	Schmitz	Brown	2-Jun	10-Oct	67.2	65.4	69.4	67.0	65.9	72.0	65.2	59.3	61.6	65.9
West Central	Steffl	Brown	17-May	6-Oct	63.6	63.9	68.0	65.8	69.3	72.2	65.7			66.9
West Central	Zimmer	Chippewa	9-Jun	11-Oct	55.8	49.9	50.2	43.4	44.8	51.0				49.2
West Central	Johnson	Kandiyohi	24-Oct	24-Oct	59.7	59.6	56.9	59.5	54.9	63.6				59.0
West Central	Wattnem	Kandiyohi	27-May	9-Oct	76.6	79.3	75.8	71.8	64.6	64.3	68.3			71.5
West Central	Dwire	Lincoln	24-May	6-Oct	65.7	60.9	60.1	62.4	59.1	65.8	58.2			61.7
West Central	Bedow	Lyon	29-May	27-Sep	51.4	53.6	51.1	51.5	53.4	51.8	48.8			51.7
West Central	Local Roots	Meeker	25-May	9-Oct	51.4	49.5	52.0	50.5	53.7	56.2	57.6			53.0
West Central	North Fork	Meeker	23-May	11-Oct	65.6	65.1	65.5	67.9	70.0	70.7	63.7	58.9	62.8	65.6
West Central	Schwab	Nicollet	20-May	3-Oct	65.4	67.2	69.0	69.0	70.8	69.0	67.0	70.5		68.5
West Central	Hoffbeck	Redwood	27-May	4-Oct	57.0	56.7	58.6	62.8	63.3	64.4	62.3	58.7	63.2	60.8
West Central	Hoffbeck	Redwood	27-May	4-Oct	61.0	64.5	68.1	70.4	66.5	70.2	70.5	68.9		67.5
West Central	Schneider	Redwood	28-May	8-Oct	59.5	63.6	64.1	62.8	62.9	68.1	64.1	60.6	60.2	62.9
West Central	Wondercheck	Redwood	25-May	3-Oct	51.6	45.5	50.3	47.7	51.3	52.8	49.9		51.2	50.0
West Central	Lee	Renville	16-May	2-Oct	63.2	63.0	64.0	64.9	64.5	66.5	63.6	66.2	65.8	64.6
West Central	Local Roots	Renville	22-May	29-Sep	70.9	67.2	69.9	68.5	69.9	69.1	66.6	66.7	65.4	68.2
West Central	Ag Edge	Sibley	24-May	2-Oct	68.2	58.6	66.4	59.3	61.7	64.6	62.1			63.0
West Central	Local Roots	Sibley	22-May	2-Oct	64.3	59.6	63.3	63.6	65.2	67.3	65.6			64.1
Above Plot Average					Product Yield Average	62.1	60.7	62.4	61.6	61.8	64.4	62.4	63.7	61.5

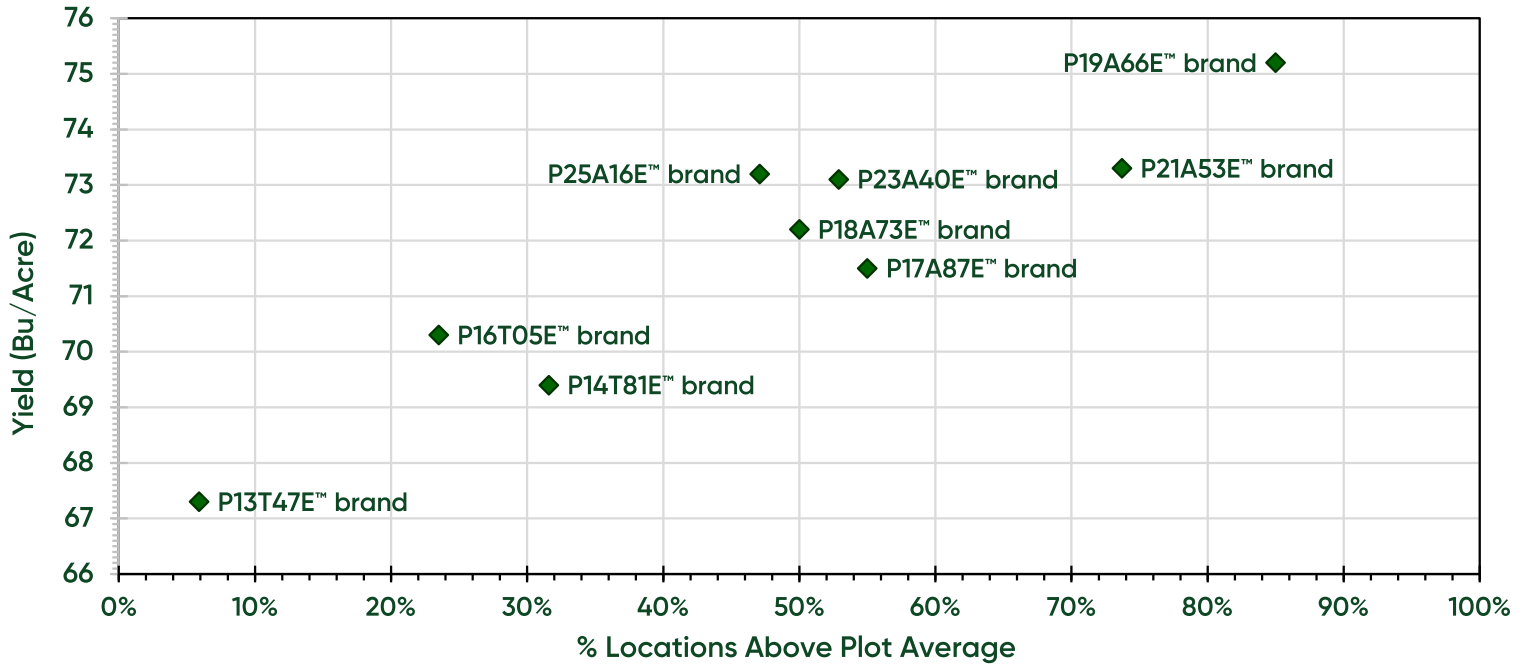
2022 Southwest Minnesota Pioneer Enlist E3[®] Soybean Plots



Area of Minnesota	Pioneer Sales Representative	County	Planting Date	Harvest Date	Pioneer Enlist E3 [®] Products at these locations									Average
					P13T47E™ brand	P16T05E™ brand	P17A87E™ brand	P18A73E™ brand	P19A66E™ brand	P21A53E™ brand	P21T72E™ brand	P23A40E™ brand	P25A16E™ brand	
Southwest	AP Ag	Cottonwood	15-May	10-Oct		53.6	50.8	56.9	53.3	39.4	42.4	41.8	54.9	49.1
Southwest	M J Hass	Cottonwood	14-May	29-Sep	57.9		63.7	65.2	67.4	61.4		63.6	67.3	63.8
Southwest	M J Hass	Cottonwood	22-May	29-Sep	60.1	64.8	63.0	65.6	67.0	60.2	67.3	62.1	70.6	64.5
Southwest	Samuelson	Cottonwood	19-May	3-Oct	59.8	64.1	64.5	63.9	73.5	67.6	68.9	68.1	71.5	66.9
Southwest	Samuelson	Cottonwood	27-May	30-Sep	61.4	62.0	60.2	57.2	64.3	64.0	66.4	61.8	63.6	62.3
Southwest	Russell	Dickinson	16-May	1-Oct	49.4	52.6	53.0	53.2	58.2	54.4	53.7	51.5	58.7	53.9
Southwest	Bisaillon	Jackson	21-May	6-Oct	69.3	65.6	66.9			66.6		64.8	65.2	66.4
Southwest	Central Seed	Jackson	15-May	30-Sep	67.6	70.1	65.8	70.5	72.9	71.6	73.6	66.8	72.8	70.2
Southwest	Fransen	Jackson	18-May	2-Oct	59.4		62.5	63.6	67.0	65.2	63.0	68.1	70.9	65.0
Southwest	Fransen	Jackson	20-May	6-Oct	70.7	70.7	69.6	68.7	71.0	71.1	71.9	73.0	67.4	70.5
Southwest	Sether	Jackson	19-May	3-Oct	66.0	68.7	68.2	67.0	67.5	65.9	63.8	66.3	68.4	66.9
Southwest	266 Ag	Nobles	17-May	30-Sep	45.2	57.2	52.4	55.7	66.6	63.4	60.8	64.5	73.5	59.9
Southwest	266 Ag	Nobles	23-May	30-Sep	70.3	65.4	64.4	64.4	67.3	65.6	63.4	68.3	71.7	66.8
Southwest	266 Ag	Nobles	24-May	2-Oct	57.7	61.5	59.7	66.0	66.4	61.8	62.1	62.4	62.8	62.3
Southwest	Hass Ag	Nobles	11-May	28-Sep		74.5	75.3	74.0	75.6	75.9	73.9	76.6	73.6	74.9
Southwest	Russell	Nobles	11-May	30-Sep	67.7	70.1	70.5	74.6	77.0	73.0	73.2	71.1	74.2	72.4
Southwest	Rheault Ag	Rock	20-May	3-Oct	78.9	79.4	78.3	74.1	80.9	79.9	74.0	77.5	76.2	77.7
Southwest	Rheault Ag	Rock	20-May	3-Oct	73.6	73.6	72.9	70.0	74.2	74.8	70.3	71.5	70.0	72.3
Southwest	Rheault Ag	Rock	20-May	4-Oct	76.6	79.6	79.2	73.2	81.7	83.2	77.6	82.1	79.9	79.2
Southwest	Solma	Rock	10-May	30-Sep	69.2	71.3	71.8	71.3	74.2	79.3	77.9	77.6	82.7	75.0
Southwest	Solma	Rock	16-May	3-Oct	69.3	71.8	68.2	67.6	70.4	69.7	68.0	74.9	74.5	70.5
Above Plot Average					Product Yield Average	64.7	67.2	65.8	66.1	69.8	67.3	67.0	67.4	70.0



2022 South Central Minnesota Pioneer Enlist E3[®] Soybean Plots



Area of Minnesota	Pioneer Sales Representative	County	Planting Date	Harvest Date	Pioneer Enlist E3 [®] Products at these locations									Average				
					P13T47E™ brand	P14T81E™ brand	P16T05E™ brand	P17A87E™ brand	P18A73E™ brand	P19A66E™ brand	P21A53E™ brand	P23A40E™ brand	P25A16E™ brand					
South Central	Grover	Blue Earth	15-May	29-Sep	69.9	74.0	72.2	79.1	77.4	75.9	78.4			75.3				
South Central	River Hills Ag	Blue Earth	6-May	9-Oct	68.0	62.0	67.0	67.9	68.9	68.9	69.7	71.8	71.1	68.4				
South Central	River Hills Ag	Blue Earth	7-May	30-Sep		72.6	74.4	72.8	73.0	77.4	80.5	79.6	91.5	77.7				
South Central	GRO AG	Brown	23-May	6-Oct	70.0	71.7	74.8	75.0	71.4	74.6	73.3	72.6	69.7	72.6				
South Central	D & J Seeds	Faribault	9-May	28-Sep	63.9	68.6		68.6	66.2	70.4	72.6	69.1	67.7	68.4				
South Central	D & J Seeds	Faribault	10-May	3-Oct	79.5	82.6		81.3	79.2	82.8	80.8	80.7	79.2	80.8				
South Central	Heine	Faribault	16-May	8-Oct	75.6	78.3	75.0	72.9	69.7	71.8	74.1	72.7	71.7	73.5				
South Central	RJ Olson	Faribault	16-May	6-Oct	61.8	59.5	73.7	72.5	75.3	76.8	77.8	74.6	72.5	71.6				
South Central	D & J Seeds	Freeborn	13-May	10-Oct				75.6	79.4	76.4	76.5	76.1	68.9	75.5				
South Central	D & J Seeds	Freeborn	15-May	10-Oct	66.5	69.3	70.3	73.4	70.5	72.9	77.9	70.9	66.7	70.9				
South Central	Elm Creek	Martin	17-May	28-Sep	56.8	54.2	56.0	56.4	63.6	68.2	60.3	59.4	60.0	59.4				
South Central	Elm Creek	Martin	17-May	7-Oct		92.3	86.5	88.4	83.6	85.7	85.9	84.0	86.6	86.6				
South Central	Elm Creek	Martin	24-May	1-Oct	65.4	61.5	64.8	70.3	72.4	73.7	66.2			67.8				
South Central	Salic	Martin	22-May	6-Oct	73.0	73.0	73.0	69.1	75.8	80.0	78.8	77.9	77.1	75.3				
South Central	WMS	Martin	21-May	3-Oct	67.4	66.8	68.6	67.0	67.3	69.9	70.1	67.1	65.8	67.8				
South Central	WMS	Martin	22-May	1-Oct	61.8	54.3	62.2	59.1	64.5	71.7	63.6	72.4	77.0	65.2				
South Central	Landsteiner	Waseca	11-May	3-Oct	74.1	77.9	75.2	74.4	76.0	79.7	76.2	76.0	78.8	76.5				
South Central	Blomgren	Watonwan	23-May	1-Oct	59.2	60.6	63.6	61.6	64.7	70.1	57.3	68.9	69.1	63.9				
South Central	Miest	Watonwan	19-May	27-Sep	63.5	63.8	66.1	70.5	71.8	76.6				68.7				
South Central	WMS	Watonwan	23-May	4-Oct	68.5	76.3	72.1	74.9	73.9	79.6	73.5	69.3	71.7	73.3				
Above Plot Average					Product Yield Average					67.3	69.4	70.3	71.5	72.2	75.2	73.3	73.1	73.2

All Pioneer products denoted with TM are brand names.

Data is based on average of 2022 comparisons made in Southwestern Minnesota through 10.31.2022. Comparisons are against any number of products of the indicated competitor brand, unless otherwise stated, and within +/- 5 RM of the competitive brand. Product responses are variable and subject to any number of environmental, disease and pest pressures. Individual results may vary. Multi-year and multi-location data are a better predictor of future performance. DO NOT USE THIS OR ANY OTHER DATA FROM A LIMITED NUMBER OF TRIALS AS A SIGNIFICANT FACTOR IN PRODUCT SELECTION. Refer to www.pioneer.com or contact a Pioneer sales representative or authorized dealer for the latest and complete listing of traits and scores for each Pioneer® brand product.



Glyphosate
Tolerant



STS[®]
herbicide tolerant trait



Always follow stewardship practices in accordance with the Product Use Guide (PUG) or other product-specific stewardship requirements including grain marketing and pesticide label directions. **Varieties with BOLT[®] technology** provide excellent plant-back flexibility for soybeans following application of sulfonylurea (SU) herbicides such as DuPont[™] LeadOff[™] or DuPont[™] Basis[™] Blend as a component of a burndown program or for double-crop soybeans following SU herbicides such as DuPont[™] Finesse[®] applied to wheat the previous fall.

Always follow grain marketing, stewardship practices and pesticide label directions. **Varieties with the Glyphosate Tolerant trait** (including those designated by the letter "R" in the product number) contain genes that confer tolerance to glyphosate herbicides. Glyphosate herbicides will kill crops that are not tolerant to glyphosate.

Varieties with the Roundup Ready 2 Yield[®] (RR2Y) trait: ALWAYS READ AND FOLLOW PESTICIDE LABEL DIRECTIONS. Roundup Ready[®] technology contains genes that confer tolerance to glyphosate, an active ingredient in Roundup[®] brand agricultural herbicides. Agricultural herbicides containing glyphosate will kill crops that are not tolerant to glyphosate. Roundup Ready 2 Yield[®] is a trademark of Bayer Group.

Varieties with the STS[®] trait are tolerant to certain sulfonylurea (SU) herbicides. This technology allows post-emergent applications of DuPont[™] Synchrony[®] XP and DuPont[™] Classic[®] herbicides without crop injury or stress (see herbicide product labels). NOTE: A soybean variety with a herbicide tolerant trait does not confer tolerance to all herbicides. Spraying herbicides not labeled for a specific soybean variety will result in severe plant injury or plant death. Always read and follow herbicide label directions and precautions for use.

Varieties with the LibertyLink[®] (LL) gene are resistant to Liberty[®] herbicide. Liberty[®], LibertyLink[®] and the Water Droplet Design are registered trademarks of BASF.

DO NOT APPLY DICAMBA HERBICIDE IN-CROP TO SOYBEANS WITH Roundup Ready 2 Xtend[®] technology unless you use a dicamba herbicide product that is specifically labeled for that use in the location where you intend to make the application. IT IS A VIOLATION OF FEDERAL AND STATE LAW TO MAKE AN IN-CROP APPLICATION OF ANY DICAMBA HERBICIDE PRODUCT ON SOYBEANS WITH Roundup Ready 2 Xtend[®] technology, OR ANY OTHER PESTICIDE APPLICATION, UNLESS THE PRODUCT LABELING SPECIFICALLY AUTHORIZES THE USE. Contact the U.S. EPA and your state pesticide regulatory agency with any questions about the approval status of dicamba herbicide products for in-crop use with soybeans with Roundup Ready 2 Xtend[®] technology. ALWAYS READ AND FOLLOW PESTICIDE LABEL DIRECTIONS. Soybeans with Roundup Ready 2 Xtend[®] technology contain genes that confer tolerance to glyphosate and dicamba. Glyphosate herbicides will kill crops that are not tolerant to glyphosate. Dicamba will kill crops that are not tolerant to dicamba. Roundup Ready 2 Xtend[®] is a registered trademark of Monsanto Technology LLC used under license.

Varieties with Enlist E3[®] technology (E3): The transgenic soybean event in Enlist E3[®] soybeans is jointly developed and owned by Corteva Agriscience and M.S. Technologies L.L.C. The Enlist weed control system is owned and developed by Dow AgroSciences LLC. Enlist Duo[®] and Enlist One[®] herbicides are not registered for sale or use in all states or counties. Contact your state pesticide regulatory agency to determine if a product is registered for sale or use in your area. Enlist Duo and Enlist One herbicides are the only 2,4-D products authorized for use in Enlist crops. Always read and follow label directions. Consult Enlist herbicide labels for weed species controlled.

Plenish[®] (P) high oleic soybeans have an enhanced oil profile and are produced and channeled under contract to specific grain markets. Growers should refer to the Pioneer Product Use Guide on www.pioneer.com/us/stewardship for more information.

SCN = Resistant to one or more races of soybean cyst nematode.

Pioneer[®] brand products are provided subject to the terms and conditions of purchase which are part of the labeling and purchase documents. TM Trademarks of Corteva Agriscience and its affiliated companies. © 2022 Corteva. 22D-1292-soybean mailer