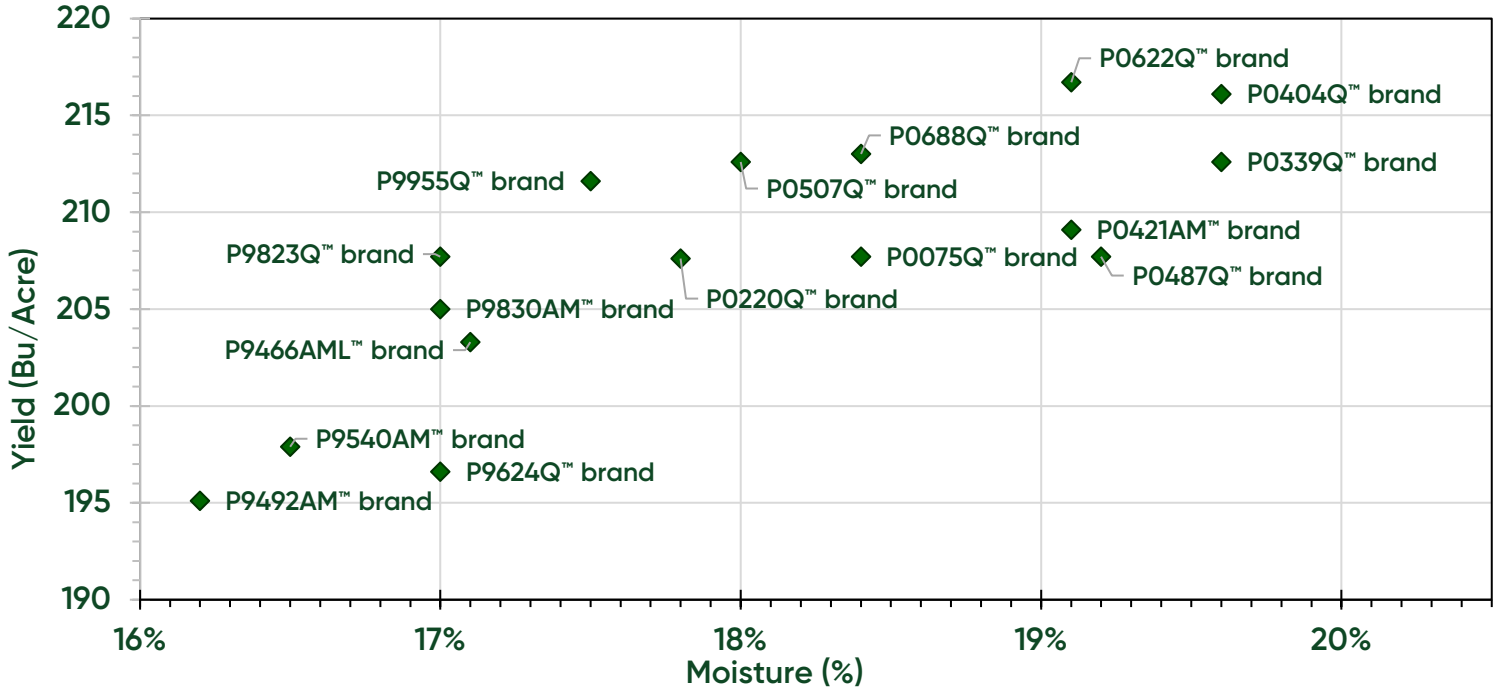
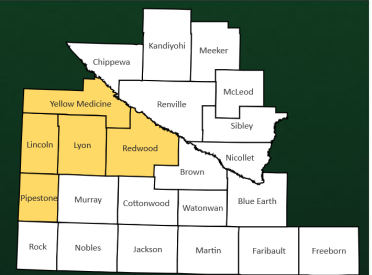


West Central Minnesota Pioneer® Corn Plots

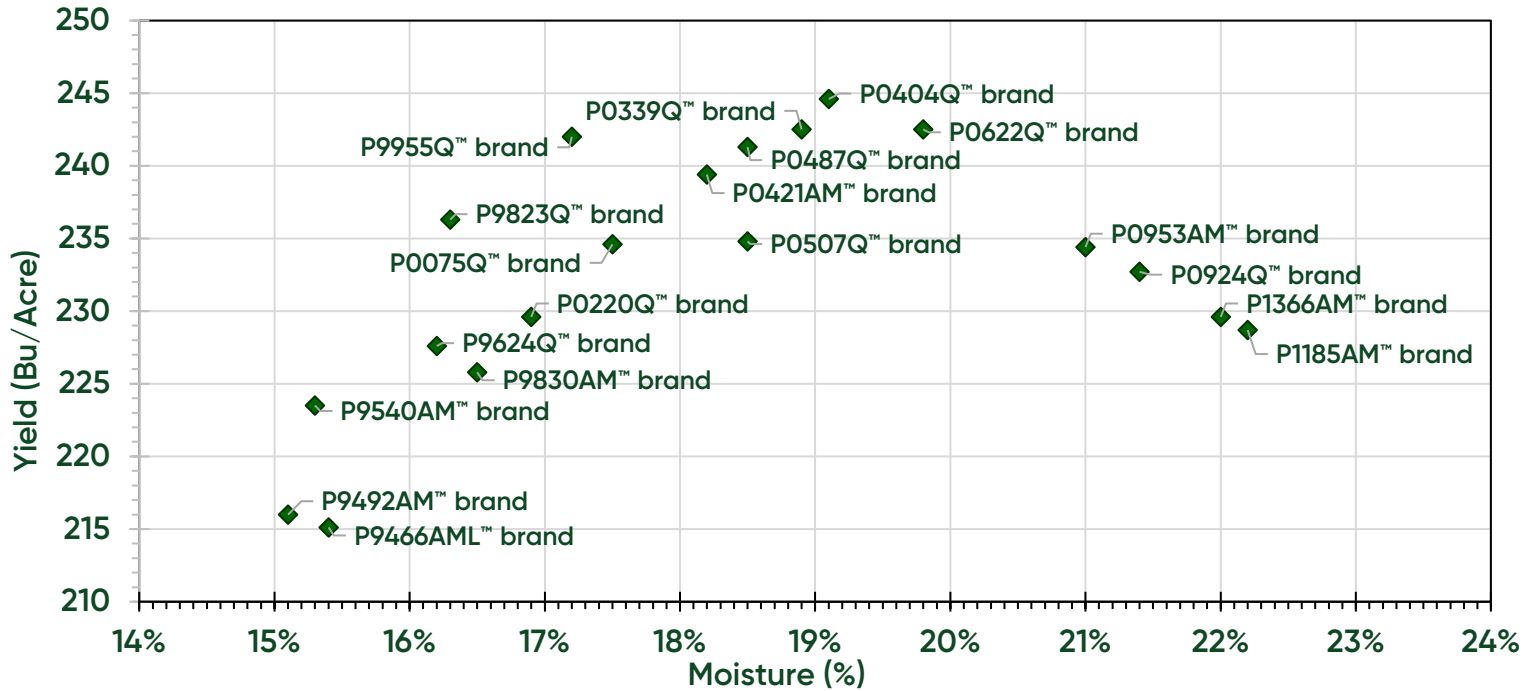
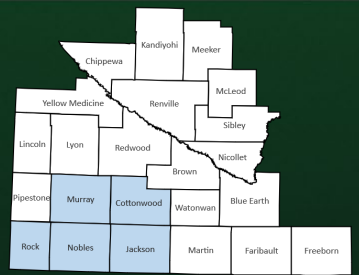


Area of Minnesota	Pioneer Sales Representative	County	Planting Date	Harvest Date	Pioneer® Corn Products in these locations																Average	
					P9466AML™ brand	P9492AM™ brand	P9540AM™ brand	P9624Q™ brand	P9823Q™ brand	P9830AM™ brand	P9955Q™ brand	P0075Q™ brand	P0220Q™ brand	P0339Q™ brand	P0404Q™ brand	P0421AM™ brand	P0487Q™ brand	P0507Q™ brand	P0622Q™ brand	P0688Q™ brand		
West Central	Wondercheck	Cottonwood	19-May	9-Oct	212.5	215.5	215.2	210.7	220.7	218.9	222.4	222.8		229.4	237.8	232.0	227.4		232.5		222.9	
West Central	Bedow	Lincoln	7-May	20-Oct	224.7	223.7	222.6	224.0	230.2	224.0	226.4	223.4	224.4	222.4	226.0						224.7	
West Central	Infinity Ag	Lincoln	26-May	10-Oct	186.2	186.0	180.5	188.6	204.2		204.9	211.2		211.7	209.2		214.9				199.7	
West Central	Zelinski	Lincoln	15-May	22-Oct	183.5	185.1	199.6	184.7	201.8	217.3	209.9	212.4	211.1	202.3	210.0	201.5	203.4				201.7	
West Central	Infinity Ag	Lyon	6-May	9-Oct	198.6	205.5	211.9	210.9	220.0	221.5	222.1	220.8	214.7	231.9	231.4	226.6	226.7	219.5	229.8	222.9	219.7	
West Central	Infinity Ag	Lyon	7-May	13-Oct					221.4	214.9	223.9	228.9		231.6	231.4		230.3	226.8	242.6	234.0	228.6	
West Central	Bouman	Pipestone	19-May	3-Oct	214.9	202.1	203.6	201.9	223.1	206.0	217.0	204.2	211.4	212.0	219.2	204.8	210.5	203.1	206.6	211.7	209.5	
West Central	Bouman	Pipestone	19-May	3-Oct	214.9	202.1	203.6	201.9	223.1	206.0	217.0	204.2	211.4	212.0	219.2	204.8	210.5				210.1	
West Central	Bouman	Pipestone	19-May	19-Oct			164.8	171.5	176.8	187.9	176.6	186.5	181.4	185.6	190.3	196.8	197.6	179.4			182.9	
West Central	Bouman	Pipestone	19-May	19-Oct			164.8	171.5	176.8	187.9	176.6	186.5	181.4	185.6	190.3	196.8	197.6	179.4			182.9	
West Central	Mid County	Redwood	11-May	10-Oct					163.0	180.9	197.9	192.7	188.4	197.2	193.8	192.6		199.7	209.7	211.5	193.4	
West Central	Schneider	Redwood	16-May	22-Oct					219.8	220.6	233.9	221.5	228.8	230.6	227.7	221.7	208.0	218.2	199.7	197.5	219.0	
West Central	Schneider	Redwood	20-May	26-Oct	201.6	201.8	207.2	195.9	196.2	193.8	196.7	193.7	206.2	209.1	206.5	198.4	200.2	203.4	200.2	202.5	200.8	
West Central	Wondercheck	Redwood	10-May	10-Oct	193.1	194.8	189.9	190.8	185.9	182.8	190.1	194.5	190.1	187.1	198.0	201.4	201.2	202.5	204.4	200.6	194.2	
West Central	Schneider	Renville	16-May	20-Oct					229.9	230.6	238.9	223.1	233.1	231.5	237.7	230.4		227.7	224.8	222.9	230.1	
Average Yield					203.3	195.1	197.9	196.6	207.7	205.0	211.6	207.7	207.6	212.6	216.1	209.1	207.7	212.6	216.7	213.0		
Average Moisture					17.1	16.2	16.5	17.0	17.0	17.0	17.5	18.4	17.8	19.6	19.6	19.1	19.2	18.0	19.1	18.4		

Above Plot Average

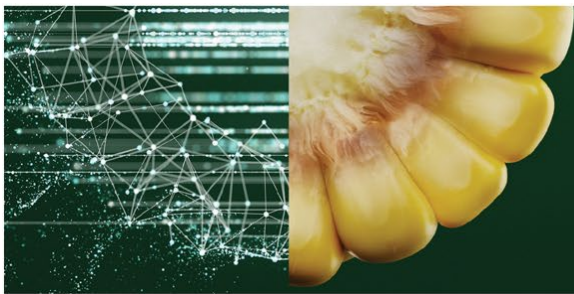


Southwest Minnesota Pioneer® Corn Plots

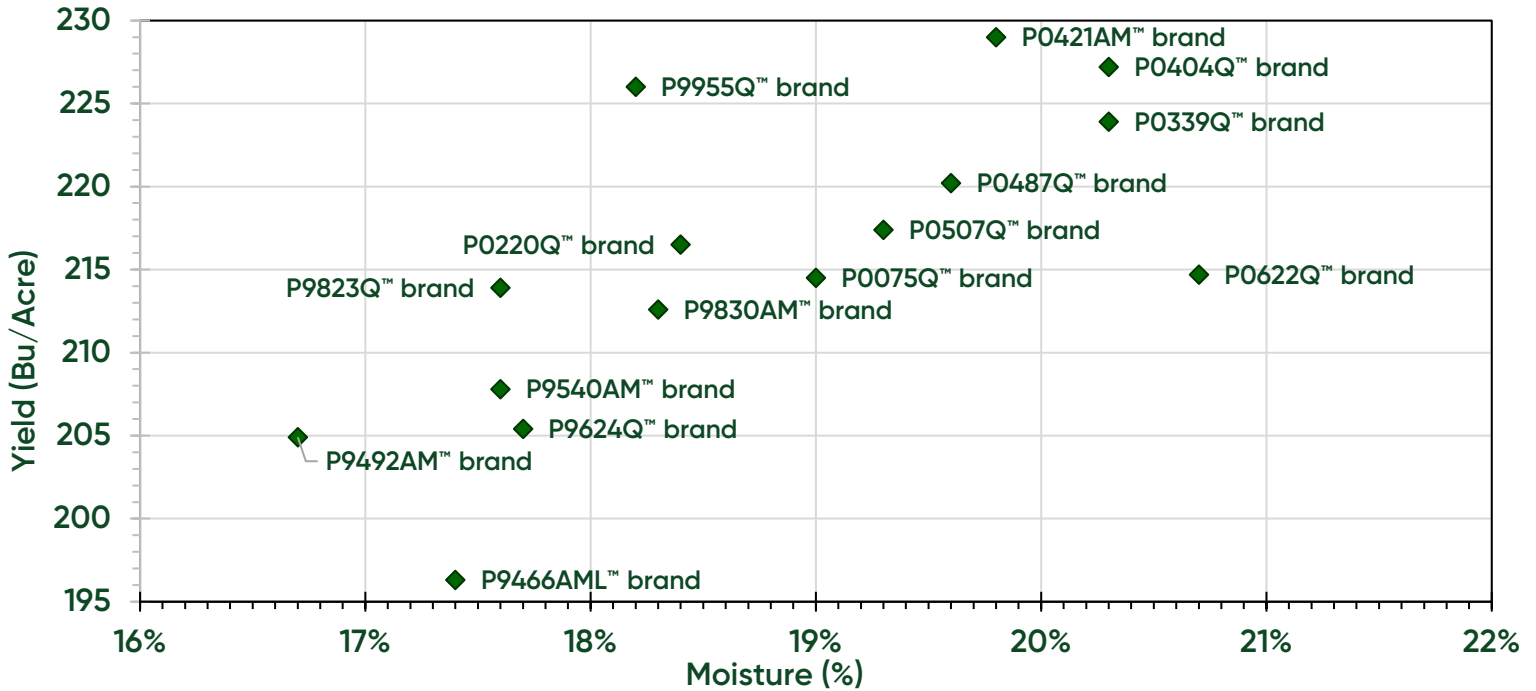


Area of Minnesota	Pioneer Sales Representative	County	Planting Date	Harvest Date	Pioneer® Corn Products in these locations																Average			
					P9466AML™ brand	P9492AM™ brand	P9540AM™ brand	P9624Q™ brand	P9823Q™ brand	P9830AM™ brand	P9955Q™ brand	P0075Q™ brand	P0220Q™ brand	P0339Q™ brand	P0404Q™ brand	P0421AM™ brand	P0487Q™ brand	P0507Q™ brand	P0622Q™ brand	P0924Q™ brand		P0953AM™ brand	P1185AM™ brand	P1366AM™ brand
Southwest	AP Ag	Cottonwood	15-May	15-Oct	236.0		244.1	226.2	232.5	228.7	246.9	231.3	222.1	248.0	253.2		246.2	236.3	228.4	215.3	210.6	193.5	185.5	228.5
Southwest	M J Hass	Cottonwood	10-May	10-Oct	210.0	214.6	219.9	219.8	226.6	221.0	239.2	227.5	223.8	233.1	240.1	237.2	233.2	239.0	248.8	235.1	248.7	242.4	230.2	231.1
Southwest	M J Hass	Cottonwood	10-May	11-Oct	221.8	225.7	247.3	222.9	240.7	222.6	250.8	235.4	220.6	233.7	240.2	242.3		245.4	231.2	238.3	243.5	267.4		237.0
Southwest	M J Hass	Cottonwood	10-May	19-Oct					243.6	228.2	240.8	242.0	239.5	250.6	247.7	248.5	247.0	240.8	245.8					243.1
Southwest	M J Hass	Cottonwood	13-May	27-Oct					245.8		244.1	246.2	236.2	250.7	244.9	260.6	244.1	242.4	247.3					246.2
Southwest	Samuelson	Cottonwood	11-May	6-Oct	235.6	219.2	208.3	247.0	239.9				250.4	245.4	264.1	250.4	254.2	242.6	259.7	253.1	247.5	247.4	259.0	245.2
Southwest	Samuelson	Cottonwood	19-May	14-Oct					224.2		244.3	237.1	228.6	243.2	248.9		237.9	239.0	219.9	197.6	193.4	197.0	174.0	221.9
Southwest	Samuelson	Cottonwood	20-May	20-Oct		232.7	237.8		257.9	247.6	264.3	248.9	250.9	263.9	259.1	258.9	263.1	247.9	268.2	252.6	257.9	244.2	240.8	252.7
Southwest	Bisailon	Jackson	14-May	7-Oct	227.3	222.1	233.1	218.0	240.7	226.7	231.8	222.8	227.2	241.6	250.3	241.2	232.8							232.0
Southwest	Central Seed	Jackson	11-May	8-Oct					252.4	242.6	268.8	260.1	253.3	257.1	262.6	247.4	267.8	250.7	266.9	266.9	269.0	253.4	265.3	259.0
Southwest	Fransen	Jackson	7-May	15-Oct					232.7	225.9	236.1	229.5	236.3	231.3	221.5	212.7	230.9	220.0	233.4					228.2
Southwest	Hass Ag	Jackson	10-May	12-Oct					229.4	214.5	229.2	227.6	224.6	228.7	234.0	206.2	253.0	228.8	225.1					227.4
Southwest	Sether	Jackson	19-May	26-Oct	177.4	179.6	182.7	193.4	198.0	200.4	199.3	209.0	199.4	195.3	198.8	209.5	211.5	197.0	209.9	181.9	177.7	171.9	194.5	194.1
Southwest	Rheault Ag	Lyon	4-May	14-Oct	186.9	198.2	217.4	214.4	223.9	212.3	225.8	232.2	206.5	230.6	227.8	220.1	241.5	216.8	243.5	230.6	230.2	228.8	235.5	222.3
Southwest	Fransen	Martin	11-May	12-Oct	214.5	203.4	210.5	216.6	226.4	217.4	229.8	219.5	209.4	230.4	231.2	227.1	226.9	219.1	228.2	228.8	220.6	222.5	233.3	221.9
Southwest	M J Hass	Murray	11-May	20-Oct					231.2	215.7	233.1	219.4	221.6	227.4	228.6	237.8	228.0	227.6	225.2	220.8	230.9	222.3	223.8	226.2
Southwest	266 Ag	Nobles	17-May	20-Oct	166.5	173.2	184.5	194.8	190.1	192.3	202.4	199.9	207.4	214.0	223.8	220.0	219.6	224.2	216.3					201.9
Southwest	266 Ag	Nobles	19-May	17-Oct		227.1	223.4	222.9	237.9	229.7	239.5	223.1	229.7	235.4	245.4	226.0	234.4	232.1	235.9		232.3			231.7
Southwest	266 Ag	Nobles	20-May	6-Oct	220.9	209.0	223.4	230.9	229.5	220.2	235.9	233.2	214.2	237.4	233.9	239.2	218.9	226.4	227.8	212.6	213.4	198.1		223.6
Southwest	266 Ag	Nobles	21-May	9-Oct	227.1	218.5	223.3	226.8	232.3	226.9	233.0	227.9	226.7	223.2	238.3	219.5	222.5	215.7	209.1	208.6	219.4	216.0		223.0
Southwest	Hass Ag	Nobles	10-May	7-Oct	220.4	216.0	224.2	229.3	239.7	220.6	251.3	232.4	222.3	240.9	240.0	232.6	238.9	235.2	253.5	239.9	242.6	241.5	244.7	235.1
Southwest	Hass Ag	Nobles	15-May	7-Oct				246.8	258.6		268.1	251.2			263.9			258.5	250.2					256.8
Southwest	Russell	Nobles	10-May	14-Oct	222.9	231.2	228.2	243.9	246.3	244.3	261.1	245.2	246.8	262.9	259.9	258.6	258.3	245.1	254.9	246.6	259.8	243.2	233.2	247.0
Southwest	Russell	Nobles	10-May	18-Oct		223.6	232.4	236.5	225.0	241.6	235.4	224.8	250.6	246.6	244.2	238.7	233.4	253.4						237.4
Southwest	Rheault Ag	Rock	11-May	26-Oct		233.0	240.4	246.3	260.7	256.1	269.3	257.4	256.3	274.1	267.7	264.2	260.0	255.0	262.6					257.4
Southwest	Rheault Ag	Rock	15-May	15-Oct	237.3	241.0	245.5	252.2	268.4	258.4	274.6	260.6	248.2	275.5	275.7	263.1	267.3	253.9	273.5	276.3	287.2	269.1	265.4	262.8
Southwest	Rheault Ag	Rock	15-May	25-Oct			215.7		222.8	233.3	230.5	227.5		247.9	239.1		230.1	233.8						231.2
Southwest	Solma	Rock	11-May	21-Oct	221.9	226.7	235.9	240.7	247.6	209.7		252.2	243.3	273.5	261.3	278.5	267.0	255.7	278.5					249.5
Average Yield					215.1	216.0	223.5	227.6	236.3	225.8	242.0	234.6	229.6	242.5	244.6	239.4	241.3	234.8	242.5	232.7	234.4	228.7	229.6	
Average Moisture					15.4	15.1	15.3	16.2	16.3	16.5	17.2	17.5	16.9	18.9	19.1	18.2	18.5	18.5	19.8	21.4	21.0	22.2	22.0	

Above Plot Average

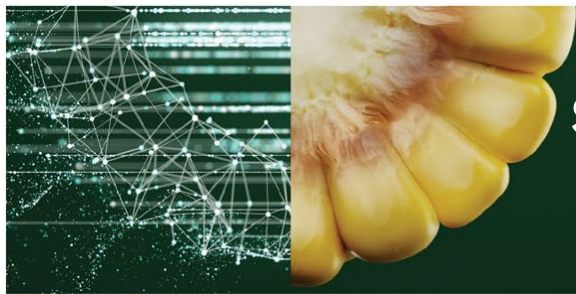


Central Minnesota Pioneer® Corn Plots

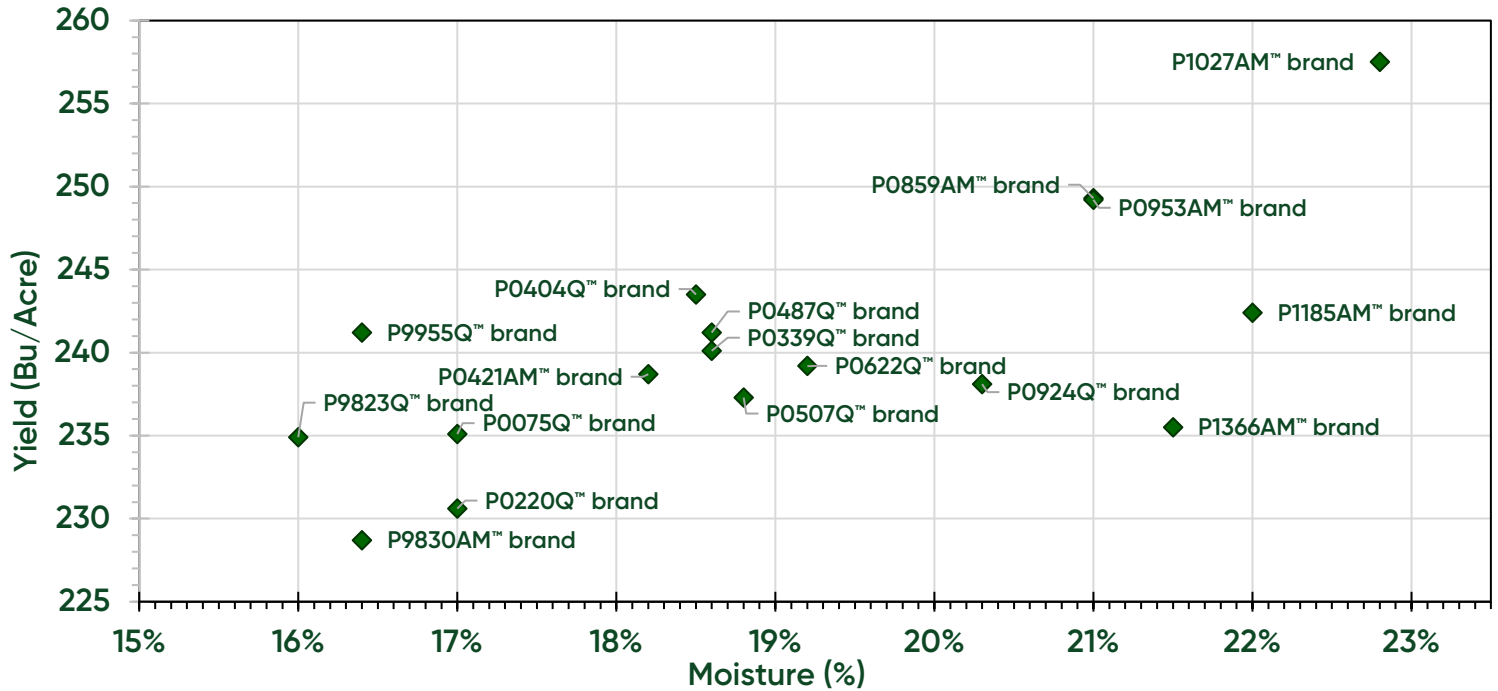
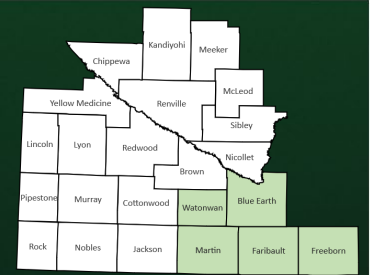


Area of Minnesota	Pioneer Sales Representative	County	Planting Date	Harvest Date	Pioneer® Corn Products in these locations														Average			
					P9466AML™ brand	P9492AM™ brand	P9540AM™ brand	P9624Q™ brand	P9823Q™ brand	P9830AM™ brand	P9955Q™ brand	P0075Q™ brand	P0220Q™ brand	P0339Q™ brand	P0404Q™ brand	P0421AM™ brand	P0487Q™ brand	P0507Q™ brand		P0622Q™ brand		
Central	Schmitz	Brown	10-May	24-Oct					208.9	208.1	224.9	211.2	212.1	217.5	218.1	210.0	211.7	208.3	214.9	213.2		
Central	Steffl	Brown	7-May	11-Oct			191.9	197.3	193.6	189.3	212.2	214.3	234.9	246.8	246.2	240.3	236.9	239.5	234.1	221.3		
Central	Zimmer	Chippewa	10-Jun	14-Oct	200.8	190.9	194.6	181.1	161.3	208.0	193.7	188.3	197.6	193.4	202.5	214.8	217.3			195.7		
Central	Johnson	Kandiyohi	27-May	29-Oct		251.5	256.2	244.8	255.7	241.3	257.6	240.7	242.8	241.1	258.2	250.0	236.6	239.8	233.7	246.4		
Central	Wattnem	Kandiyohi	6-May	20-Oct	123.6	124.2	137.3	143.7	173.4	155.7										143.0		
Central	Local Roots	Meeker	24-May	20-Oct		197.3	198.1	195.2	195.3	194.6	195.6	187.1	189.5	194.4	203.5	207.8	194.6	195.3	188.9	195.5		
Central	North Fork	Meeker	24-May	28-Oct	180.3	181.1	195.8	181.2	189.4	191.1	201.1	187.1	183.1	188.6	190.8	197.9	206.4	193.8	177.4	189.7		
Central	Ag Edge	Nicollet	16-May	10-Oct					252.1	231.3	251.7	234.1	230.8	243.5	245.4	243.4	232.0	231.0	228.0	238.5		
Central	Schwab	Nicollet	15-May	9-Oct					213.6	197.6	220.6	197.1	213.5	214.8	234.9		188.7	206.9	194.9	208.3		
Central	212 Seed	Renville	19-May	12-Oct		242.5	245.9	235.6	254.3	245.6	257.6	244.7	242.3	255.7	254.1	255.1	250.9	237.4		247.8		
Central	212 Seed	Renville	20-May	21-Oct	229.1	230.2	232.2	233.7	241.0	248.7	257.1	250.8	240.4	260.6	249.8	255.7	245.1	246.1	234.9	243.7		
Central	Lee	Renville	7-May	11-Oct	211.5	221.5	227.1	232.0	241.3	232.4	249.0	232.7	237.6	252.8	253.1	250.7	256.2	238.6	254.6	239.4		
Central	Local Roots	Renville	19-May	18-Oct	207.0	207.3	206.0	214.3	208.3	224.6	216.1	205.2	207.9	213.2	213.1	233.9	208.5	207.6	212.4	212.4		
Central	Local Roots	Renville	21-May	15-Oct	209.0	206.2	207.8	204.2	212.9	220.3	211.9	206.4	204.8	207.6	213.5	218.4	200.1	195.5	203.8	208.2		
Central	Ag Edge	Sibley	16-May	10-Oct	211.2	207.7	215.3	211.4	223.3	224.3	233.3	222.4	221.0	231.6	229.7	232.1				221.9		
Central	Local Roots	Sibley	11-May	20-Oct	193.8	197.8	193.1	195.2	198.4	188.0	207.2	195.9	189.8	196.7	195.8	195.7	197.6	186.5	198.2	195.3		
Average Yield					196.3	204.9	207.8	205.4	213.9	212.6	226.0	214.5	216.5	223.9	227.2	229.0	220.2	217.4	214.7			
Average Moisture					17.4	16.7	17.6	17.7	17.6	18.3	18.2	19.0	18.4	20.3	20.3	19.8	19.6	19.3	20.7			

Above Plot Average



South Central Minnesota Pioneer® Corn Plots



Area of Minnesota	Pioneer Sales Representative	County	Planting Date	Harvest Date	Pioneer® Corn Products in these locations																Average	
					P9823Q™ brand	P9830AM™ brand	P9955Q™ brand	P0075Q™ brand	P0220Q™ brand	P0339Q™ brand	P0404Q™ brand	P0421AM™ brand	P0487Q™ brand	P0507Q™ brand	P0622Q™ brand	P0859AM™ brand	P0924Q™ brand	P0953AM™ brand	P1027AM™ brand	P1185AM™ brand		P1366AM™ brand
South Central	Grover	Blue Earth	6-May	20-Oct	241.6	236.4	252.0	232.4	247.5	254.0	258.3			247.1	261.1	264.2	248.1	272.6	253.7	247.1	251.2	
South Central	Landsteiner	Blue Earth	11-May	13-Oct	235.8	227.7	242.2	222.5	222.9	224.7	235.7	240.8	228.2	234.1	230.8	234.8	221.0	227.0	244.6	227.6	220.0	230.6
South Central	River Hills Ag	Blue Earth	6-May	15-Oct	243.9	212.4	244.8	238.7	233.8	238.3	251.2	240.0		237.5	237.4	256.4	239.8	255.1	260.3	248.7		242.6
South Central	River Hills Ag	Blue Earth	6-May	24-Oct	244.0	229.7	251.9	242.2	236.4	254.5	243.3	240.4		250.4	256.8		259.3					246.3
South Central	River Hills Ag	Blue Earth	7-May	6-Oct	228.3	223.0	236.8	220.2	227.8	218.0	239.1	225.5	249.0	237.0	241.6	257.9	209.7	242.5	234.4	236.4	235.6	233.1
South Central	River Hills Ag	Blue Earth	10-May	10-Oct			237.2	233.7	246.0	242.5	250.6	252.5	236.6	248.6		250.3	264.9		258.0		247.4	
South Central	River Hills Ag	Blue Earth	11-May	15-Oct	246.3	240.9	275.5	264.6	229.9	252.2	224.5	245.5	217.0	218.3	241.2	210.2	282.2		246.8	254.4	243.3	
South Central	GRO AG	Brown	10-May	8-Oct	233.1	229.1	237.8	240.5	246.1	240.1	247.7	246.4	245.4	250.3	253.0	247.1	273.3	283.8	274.7	266.0	264.0	251.7
South Central	D & J Seeds	Faribault	6-May	15-Oct			213.0	218.7		202.5		227.7	216.0		211.9	235.4	211.6	210.3	212.1		215.9	
South Central	D & J Seeds	Faribault	10-May	27-Oct	223.8	234.6	236.0	233.7	230.9		233.2	239.8		215.4	227.8	227.2					230.2	
South Central	Grover	Faribault	10-May	26-Oct	230.2		253.6	241.3		242.4	245.3			245.4	258.2		247.0	255.4		255.1	245.7	247.2
South Central	Heine	Faribault	6-May	11-Oct	229.8	233.1	224.4	230.0	232.6	224.4	241.1	239.1	243.5	240.6	220.8	244.0	254.7	238.4		250.6	244.5	237.0
South Central	Heine	Faribault	11-May	6-Oct	233.9	205.8	226.9	225.8	215.1	235.6	242.6	227.6	235.7	235.6	231.0		233.0	226.2		222.3	216.3	227.6
South Central	RJ Olson	Faribault	10-May	20-Oct	257.6	244.9	250.4	243.9	248.5	256.6	257.6	256.6	262.0	257.7	252.9	276.6	255.1	272.1		256.8	243.4	255.8
South Central	Twedt	Faribault	7-May	12-Oct	229.7	233.8	245.0	238.2	237.5	227.0	237.8	249.6	256.1	236.7	228.5							238.2
South Central	Twedt	Faribault	10-May	17-Oct	255.3	266.5	275.4	263.7	258.3	274.0	280.8	273.9	274.7	261.6	278.7	282.4	269.6	292.8	289.9	274.9	283.3	273.9
South Central	D & J Seeds	Freeborn	7-May	28-Oct	227.9	224.9	251.1	244.4	221.0	254.6	262.7	257.0	241.8	246.5	257.8		244.1	265.8	282.4	238.6		248.0
South Central	D & J Seeds	Freeborn	10-May	21-Oct	246.6		249.2	241.9	239.7	246.3	239.5	239.4	248.5	236.8	244.8		242.1	250.7	250.5	249.1		244.7
South Central	Hassing	Freeborn	13-May	21-Oct	211.7		225.9	221.2	221.6	233.0	230.1	243.2	237.8	220.7	221.6	234.9	220.3	247.2		229.6	228.6	228.5
South Central	Elm Creek	Martin	7-May	10-Oct	241.9	224.4	242.4	220.4	217.7	239.7	242.2	220.2	226.1	216.9	198.7							224.6
South Central	Elm Creek	Martin	7-May	13-Oct	229.6		227.8	229.9		248.7	239.6				269.6		253.9	260.0				244.9
South Central	Elm Creek	Martin	11-May	12-Oct		222.5	238.8	247.7	245.0	219.6	265.8	253.4	227.5	253.2	243.9	256.6	239.2	263.0		254.2	247.3	245.2
South Central	Elm Creek	Martin	16-May	7-Oct	247.9					254.4	264.7		258.7	258.7	270.2	246.9	260.3	272.0	271.6	259.2		260.4
South Central	Elm Creek	Martin	16-May	7-Oct	242.5	248.2	269.4	244.1	250.8	273.7	268.0	252.1	264.0	257.0	256.3	254.6	249.4	261.2	265.2	257.0	257.7	257.1
South Central	Salic Seeds	Martin	10-May	11-Oct	236.0	238.8	262.4	248.6	232.6	241.3	252.5	244.9	256.2	240.6	247.6							244.7
South Central	WMS	Martin	28-Apr	13-Oct			238.3					232.8	229.4		218.9		235.0	231.3				231.0
South Central	WMS	Martin	7-May	13-Oct	230.5	209.2	238.9	231.7	231.1	236.7	238.4	233.3	243.7	244.8	235.8		237.7	252.2		243.2	238.7	236.4
South Central	WMS	Martin	9-May	20-Oct	251.0		256.3	256.2		256.9	265.1				262.6		220.8	232.2		219.8	204.4	242.2
South Central	WMS	Martin	13-May	17-Oct	252.6	243.0	269.2	259.3	258.6	262.4	265.5	264.2	262.0	249.5			240.5	255.3	271.1	249.3	229.7	255.5
South Central	WMS	Martin	19-May	26-Oct	216.6	224.5	229.3	224.3		230.1	244.9	220.4	228.7	225.8	246.3		219.7	200.7		212.1	234.6	225.6
South Central	WMS	Martin	21-May	15-Oct	202.3	214.2	214.4		213.2	220.4	229.8	227.2	226.5	219.1	211.9		209.4	213.7		193.7	194.0	213.6
South Central	River Hills Ag	Waseca	21-May	25-Oct			210.7	214.1	195.8	216.8	216.0				212.7							211.0
South Central	Blomgren	Watonwan	19-May	12-Oct	209.0	198.6	200.1	202.4	213.9	234.7	221.4	204.9	203.6	218.2	212.8	239.0	215.4	205.8		214.0	185.3	211.2
South Central	WMS	Watonwan	23-May	28-Oct	238.0	239.9	239.5	229.7	227.9	237.9	242.6	236.9	239.9	233.6	239.9	248.1	233.1	245.7		243.9	234.5	238.2
South Central	D & J Seeds	Winnebago	18-May	18-Oct	228.7	228.3	234.3	200.4	213.7	188.7	200.9	199.7	213.6	193.9	202.7	232.6	238.9	246.5	232.7	242.9		218.7
					Average Yield	234.9	228.7	241.2	235.1	230.6	240.1	243.5	238.7	241.2	237.3	239.2	249.3	238.1	249.2	257.5	242.4	235.5
Above Plot Average					Average Moisture	16.0	16.4	16.4	17.0	17.0	18.6	18.5	18.2	18.6	18.8	19.2	21.0	20.3	21.0	22.8	22.0	21.5



All Pioneer® brand products are hybrids unless designated with AM1, AM, AML, AMT, AMX, AMXT and Q, in which case they are brands.

Data is based on average of 2022 comparisons made in Southwest Minnesota through 10.31.22. Comparisons are against any number of products of the indicated competitor brand, unless otherwise stated, and within +/- <insert ###> CRM of the competitive brand. Product responses are variable and subject to any number of environmental, disease and pest pressures. Individual results may vary. Multi-year and multi-location data are a better predictor of future performance. DO NOT USE THIS OR ANY OTHER DATA FROM A LIMITED NUMBER OF TRIALS AS A SIGNIFICANT FACTOR IN PRODUCT SELECTION. Refer to www.pioneer.com or contact a Pioneer sales representative or authorized dealer for the latest and complete listing of traits and scores for each Pioneer® brand product.

- AM1** - Optimum® AcreMax® 1 insect protection system with an integrated corn rootworm refuge solution includes HXX, LL, RR2. Optimum AcreMax 1 products contain the LibertyLink® gene and can be sprayed with Liberty® herbicide. The required corn borer refuge can be planted up to half a mile away.
 - AM** - Optimum® AcreMax® insect protection system with YGCB, HX1, LL, RR2. Contains a single-bag integrated refuge solution for above-ground insects. In EPA-designated cotton-growing counties, a 20% separate corn borer refuge must be planted with Optimum AcreMax products.
 - AMT** - Optimum® AcreMax® TRIsect® insect protection system with RW,YGCB,HX1,LL,RR2. Contains a single-bag refuge solution for above- and below-ground insects. The major component contains the Agrisure® RW trait, the Bt trait, and the Herculex® I gene. In EPA-designated cotton-growing counties, a 20% separate corn borer refuge must be planted with Optimum AcreMax TRIsect products.
 - AMX** - Optimum® AcreMax® Xtra insect protection system with YGCB, HXX, LL, RR2. Contains a single-bag integrated refuge solution for above- and below-ground insects. In EPA-designated cotton-growing counties, a 20% separate corn borer refuge must be planted with Optimum AcreMax Xtra products.
 - AMXT** (Optimum® AcreMax® XTreme) - Contains a single-bag integrated refuge solution for above- and below-ground insects. The major component contains the Agrisure® RW trait, the Bt trait and the Herculex® XTRA gene. In EPA-designated cotton-growing counties, a 20% separate corn borer refuge must be planted with Optimum AcreMax XTreme products.
 - Q** (Qrome®) - Contains a single-bag integrated refuge solution for above- and below-ground insects. The major component contains the Agrisure® RW trait, the Bt trait, and the Herculex® XTRA gene. In EPA-designated cotton-growing counties, a 20% separate corn borer refuge must be planted with Qrome products. Qrome products are approved for cultivation in the U.S. and Canada. They have also received approval in a number of importing countries, most recently China. For additional information about the status of regulatory authorizations, visit <http://www.biotradestatus.com/>.
 - YGCB,HX1,LL,RR2** (Optimum® Intrasect®) - Contains the Bt trait and Herculex® I gene for resistance to corn borer.
 - YGCB,HXX,LL,RR2** (Optimum® Intrasect® Xtra) - Contains the Bt trait and the Herculex® XTRA gene for resistance to corn borer and corn rootworm.
 - RW,HX1,LL,RR2** (Optimum® TRIsect®) - Contains the Herculex® I gene for above-ground pests and the Agrisure® RW trait for resistance to corn rootworm.
 - AML** - Optimum® AcreMax® Leptra® products with AVBL, YGCB, HX1, LL, RR2. Contains a single-bag integrated refuge solution for above-ground insects. In EPA-designated cotton-growing counties, a 20% separate corn borer refuge must be planted with Optimum AcreMax Leptra products.
 - AVBL,YGCB,HX1,LL,RR2** (Optimum® Leptra®) - Contains the Agrisure Viptera® trait, the Bt trait, the Herculex® I gene, the LibertyLink® gene and the Roundup Ready® Corn 2 trait.
 - HX1** - Contains the Herculex® I insect protection gene which provides protection against European corn borer, southwestern corn borer, black cutworm, fall armyworm, lesser corn stalk borer, and sugarcane borer; and suppresses corn earworm.
 - HXX** - Herculex® XTRA contains the Herculex® I and Herculex® RW gene.
 - YGCB** - The Bt trait offers a high level of resistance to European corn borer, southwestern corn borer and southern cornstalk borer; moderate resistance to corn earworm and common stalk borer; and above average resistance to fall armyworm.
 - LL** - Contains the LibertyLink® gene for resistance to Liberty® herbicide.
 - RR2** - Contains the Roundup Ready® Corn 2 trait that provides crop safety for over-the-top applications of labeled glyphosate herbicides when applied according to label directions.
 - AQ** - Optimum® AQUAmax® product. **Product performance in water-limited environments is variable and depends on many factors such as the severity and timing of moisture deficiency, heat stress, soil type, management practices and environmental stress as well as disease and pest pressures. All products may exhibit reduced yield under water and heat stress. Individual results may vary.**
- Roundup Ready® is a registered trademark used under license from Monsanto Company.
 Liberty®, LibertyLink® and the Water Droplet Design are registered trademarks of BASF.
 Agrisure® and Agrisure Viptera® are registered trademarks of, and used under license from, a Syngenta Group Company. Agrisure® technology incorporated into these seeds is commercialized under a license from Syngenta Crop Protection AG.
 Pioneer® brand products are provided subject to the terms and conditions of purchase which are part of the labeling and purchase documents. ™® Trademarks of Corteva Agriscience and its affiliated companies. © 2022 Corteva. 22D-1292-corn mailer